



## Kellogg Rebuilding and Repair Service Catalog No. 300

**Circa 1943**

Scanned from an original document by Wayne Merit

Produced by Mike Neale

[www.kelloggtelephone.com](http://www.kelloggtelephone.com)

Member

Antique Telephone Collectors Association US

Telephone Collectors International US

Telecom Heritage Group UK

Adobe document copyright 2006, Mike Neale, Midland, Texas, USA





# KELLOGG SWITCHBOARD & SUPPLY COMPANY

## *Rebuilding and Repair Division*

308 W. 6TH STREET • KANSAS CITY • MISSOURI

THIS NEW KELLOGG REBUILDING CATALOG TELLS HOW TO PUT IDLE TELEPHONE EQUIPMENT BACK IN CIRCULATION...ECONOMICALLY!

I am enclosing a copy of the new Kellogg Rebuilding Catalog which has just been published. We have tried to make this the most useful book of its kind and hope that you will find it helpful in your work.

The rebuilding of telephones and telephone equipment, as you probably know, is one of the most important aspects of the telephone business today. It's not going too far to say that many telephone companies would be hard put to maintain efficient telephone service under today's conditions were it not for the opportunity to have old, idle or un-serviceable apparatus and equipment rebuilt into first class operating condition.

In addition to helping you meet wartime needs for uninterrupted telephone communications, rebuilding saves critical materials and conserves your service or repairman's time. Many other sound reasons why it will pay you to start a program of having equipment rebuilt are offered in this new Catalog.

You will be especially interested in reading about the painstaking care with which Kellogg rebuilds equipment into like-new condition...about the Kellogg Rebuilding Guarantee...and about how simple and practical it is to extend the life of otherwise worthless equipment by means of Kellogg Rebuilding.

You will find the Catalog pages organized for quick, easy selection of the rebuilt equipment you want. Under each piece of equipment are listed exactly what old parts are needed for each rebuilt job.

Use this Catalog to get started on a definite rebuilding program at once. Get your first rebuilding order off to us at the earliest possible moment. Rest assured, it will be handled fast, efficiently and to your complete satisfaction.

Very truly yours,

R. B. Miles, Manager  
Rebuilding and Repair Division

r'bm:ea  
enc.

FOR QUALITY REBUILDING AND REPAIRS GET IN TOUCH WITH KELLOGG

MANUFACTURERS OF TELEPHONE SYSTEMS, RADIO APPARATUS AND ELECTRICAL EQUIPMENT





Re-enlist Your Veteran Telephones and Equipment...

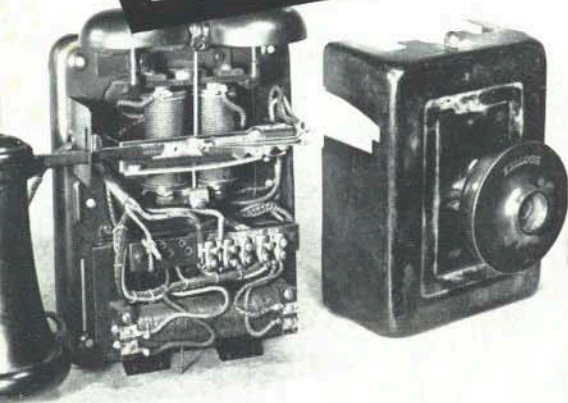


...Use this  
**WELLOGG** Rebuilding  
and Repair Service Catalog  
NO. 300



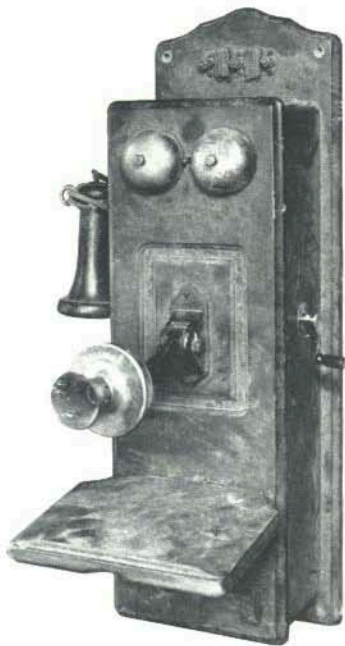
HELP YOURSELF AND THE  
NATION BY HAVING  
EQUIPMENT

# Rebuilt



A great many telephone companies have always found it desirable and profitable to put old, discarded or unserviceable telephones and telephone equipment back into useful service by having them rebuilt at a manufacturer's factory. At the present time, however, this time-honored practice of extending the useful life of equipment, is more valuable than ever before. With wartime restrictions on the purchase of new equipment, existing equipment *must* do the job. Factory rebuilding is the logical—and virtually the only—answer to the problem of keeping telephone service at the high standards essential for wartime communication.

Of course, when having equipment rebuilt, what a company primarily wants is assurance of quality rebuilding. That assurance Kellogg is prepared to offer—assurance that your equipment—as rebuilt by Kellogg—will provide a maximum of additional service!



## Rebuilding

### PUTS SLACKERS ON WARTIME JOBS

In this emergency, the Nation's every resource must serve some useful purpose. There is no room for slackers, human or material. Every telephone, every part not actually in use today, should be earmarked for some useful task. A certain amount of serviceable used equipment needs to be held in reserve, for possible use to replace equipment that becomes inoperable. Other used equipment—not in working order—ought either to be rebuilt or sold to a manufacturer (for rebuilding and resale to telephone companies that may need it urgently). And such equipment or parts as are definitely beyond hope of rebuilding or repair, should be scrapped to salvage critical materials for war production.

## Rebuilding

### SAVES CRITICAL MATERIALS

Every time a rebuilt telephone goes back into service, it has helped reduce the need for a new telephone, and therefore reduces the drain on sorely needed materials. If, instead of installing new equipment for essential replacements or permissible extensions of service, rebuilt telephones were installed, tremendous savings in copper, brass, aluminum, bronze, zinc, etc., would be realized.





# by **KELLOGG**

## *Rebuilding*

### **SAVES REPAIR AND MAINTENANCE TIME**

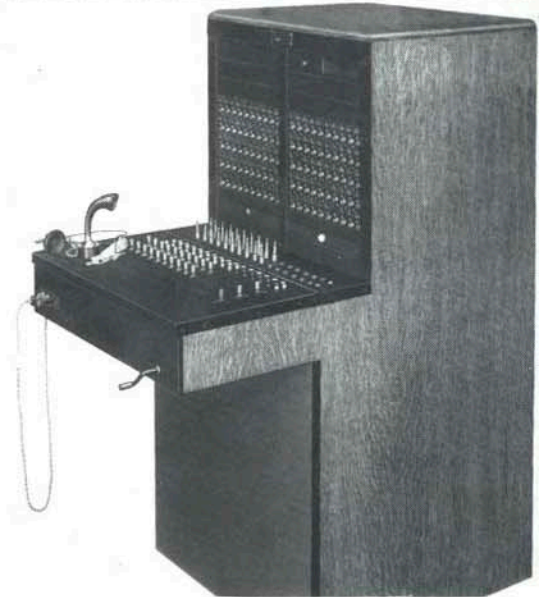
After telephones and equipment have been in hard service for many years, there is a point at which more than a simple repair job is required to keep them in first class operating condition. That is the point at which Kellogg rebuilding can save real time and money for your company in the long run. For a Kellogg rebuilt job can be put into service with the guarantee that performance will be that of new equipment! Maintenance will be minimized—and that, to a company feeling the manpower shortage, is reason enough in itself to have equipment “rebuilt by Kellogg.”



## *Rebuilding*

### **HELPS MAINTAIN HIGH SERVICE STANDARDS**

Wartime or not, your subscribers expect you to maintain telephone service at the highest standards. And insofar as your subscribers perform services that are vital to the war effort, they need such service. It's up to the telephone company to supply it. A continuous program of rebuilding greatly simplifies the job. By following a routine of having old equipment rebuilt before it can endanger service, companies can continue to supply their subscribers with quality telephone service, despite restrictions on new equipment. This applies to switchboards, as well as to telephones and other parts.



## *Rebuilding*

### **MAKES OLD TELEPHONES AS VALUABLE AS NEW**

Until the day you can again secure new telephones by simply sending an order to the manufacturer, you will find rebuilding an invaluable aid. All you do is send your used equipment, now idle, to Kellogg for complete rebuilding. As telephones in service become inefficient, remove them and replace them with the Kellogg-rebuilt jobs. Send in the replaced instruments for rebuilding. Set up a regular rebuilding program, and you'll find yourself in position to render fine telephone service in spite of restrictions on new equipment.





**WHAT**

# "Rebuilt by **KELLOGG**" MEANS



## **COMPLETE DISMANTLING, CLEANING, REFINISHING, REPLACEMENT OF WORN PARTS, RE-MANUFACTURING OF ALL OTHERS**

When a telephone or other piece of apparatus is sent to Kellogg for rebuilding, it "gets the works." First, it's completely dismantled, down to the last tiny bolt and screw. Every part is thoroughly cleaned. Worn parts are replaced by new parts. Others are re-manufactured in the extensive Kellogg shops devoted exclusively to this type of work.



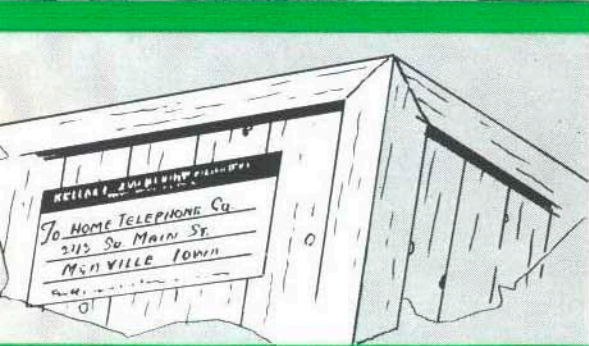
## **RE-ASSEMBLY IN "LIKE-NEW" CONDITION**

Next step is to re-assemble the parts. Kellogg rebuilding experts using the same, sure methods employed in the Kellogg factory, put the parts together with exacting care. The complete instrument is then checked and tested for operating efficiency. The resulting instrument would be hard to tell from a new one of the same type.



## **ALL WORK UNQUALIFIEDLY GUARANTEED**

The Kellogg company stands behind every rebuilding, repairing and remanufacturing job done for you. A straightforward, simple guarantee provides full assurance that you can depend on Kellogg-rebuilt equipment. It will be right in every way—in performance, durability and appearance! Read the guarantee form on page 6.

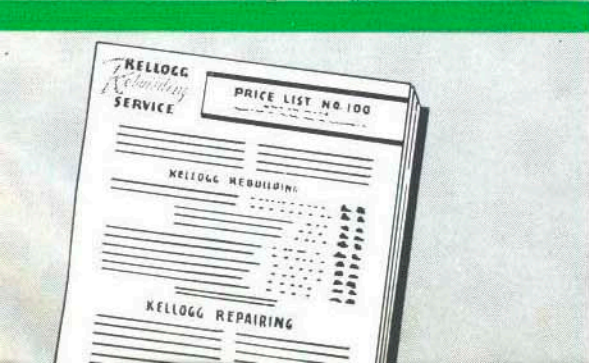


## **PROMPT ACTION ON REBUILDING AND REPAIR ORDERS**

There will be times when you will need extra-fast service on your orders. That's all the more reason for sending them to Kellogg. Our Rebuilding Division is amply staffed and has the facilities to do the finest kind of rebuilding and repair work quickly and efficiently.

## **THE BEST IN REBUILDING COSTS NO MORE**

Prices for Kellogg Rebuilding and Repair work are "in line." Your orders receive the quality workmanship and attention to the smallest detail that has been characteristic of Kellogg in its over 46 years as a leading manufacturer of telephone equipment. Send your rebuilding and repair orders to Kellogg with full confidence of receiving the utmost value for your money!





# HOW KELLOGG REBUILDS YOUR EQUIPMENT

## IN "LIKE-NEW" CONDITION

"Rebuilt by Kellogg" means REBUILT in every sense of the word. For Kellogg goes all the way in rebuilding any piece of equipment, whether it's a telephone receiver or a complete switchboard. Any part that requires replacement is replaced. Other parts are completely remanufactured "like-new." Nothing is left undone to put the equipment you send us in the finest operating and physical condition.



### RECEIVERS

Here are the high-spots of what happens to a receiver sent to Kellogg for rebuilding: receiver is completely taken apart . . . all parts are cleaned . . . magnets are recharged . . . coils are rewound if necessary . . . old diaphragm is replaced with new . . . the highly important relationship between pole pieces and diaphragm is carefully checked and adjusted for proper diaphragm clearance (a point often overlooked) . . . new Kellogg long-life receiver cord is furnished . . . and rebuilt receiver is checked and tested for operating efficiency.



### TRANSMITTERS

Transmitters rebuilt by Kellogg are returned to you as good as new. After complete disassembly and cleaning, and replacement of inefficient parts, transmitter is re-assembled. New carbon chambers or electrodes with the right type of Kellogg carbon for the transmitter are installed. New Bakelite mouth-pieces are furnished wherever necessary. (At slight additional cost, new patented Kellogg NON-POSITIONAL transmitter will be furnished. See page 11.)



### GENERATORS

Generator rebuilding includes complete disassembly, cleaning all parts, testing of armatures, rewinding armatures where required, recharging magnets, lining up generator bearings, renewal of bearings where necessary, refinishing all necessary parts, replacing insulation, renewing contacts, etc.

When parts are re-assembled, generators are thoroughly tested, shunts are adjusted, gears are adjusted to assure smooth operation, and voltage output is checked.



### RINGERS

The same thoroughness is used in rebuilding ringers. Ringers are taken apart and all metal parts refinished. Coils are rewound with new wire wherever necessary, magnets are recharged, and all parts re-assembled. Ringer gongs are cleaned down to the metal and a new black enamel finish is applied and baked on. Thorough testing completes the job. You are assured of ringers that look and perform "like new!"



### COILS

On every rebuilding job, all coils are thoroughly checked. Obsolete coils that do not measure up to present day standards are replaced with completely re-manufactured coils of a modern type. The wire used in the winding of those coils is of the correct size to assure that the rebuilt coil will have the proper resistance and electrical characteristics. These coils must meet the high, rigid specifications established by Kellogg.



### HOOKSWITCHES

Old or obsolete hookswitches that are not suitable for efficient performance are replaced with modern Kellogg hookswitches. Those that can be re-manufactured are completely taken apart . . . all parts are thoroughly cleaned . . . parts are carefully reassembled . . . the hookswitch springs are readjusted to make perfect contact.



### CORDS

When Kellogg rebuilds a telephone, it comes back to you completely equipped with new Kellogg cords of the proper type and size. All cords are of the finest quality obtainable, manufactured in Kellogg's great Chicago factory to highest standards of durability. Years of experience in cord manufacture, skilled workmen and modern machines are the reasons why Kellogg Cords last longer.

### CABINETS AND WIRING

Your old wood cabinets are replaced with brand-new oak cabinets. All rebuilt telephones are completely rewired, neatly and permanently, with new Kellogg wire of the best quality and correct size and type.



### REFINISHING

All telephones and parts that require it are refinished to look and wear like new by the Kellogg Rebuilding Division. Items like steel boxes, desk stands, ringer gongs and other metal parts are cleaned right down to the metal. Then they are carefully buffed and new, fine quality enamel is applied and baked on. The finish of a Kellogg rebuilt job is every bit as handsome and durable as the finish of new equipment.



## KELLOGG REBUILDING

# Guarantee

All equipment rebuilt by the Kellogg Switchboard & Supply Company is guaranteed to function properly and give good service under regular operating conditions for a period of one year.

Utmost care and workmanship is used to insure reliable operating efficiency and each item is thoroughly checked, tested and approved before shipment.

Any items proving unsatisfactory in service as to either material or workmanship should be returned for inspection and adjustment.

KELLOGG SWITCHBOARD & SUPPLY CO

by \_\_\_\_\_

Manager, Rebuilding Division

**KELLOGG**  
*Rebuilding*  
AND REPAIR  
**SERVICE**

## ALL REBUILDING IS BACKED BY THE

# **KELLOGG** *Guarantee*

When your rebuilding work is done by Kellogg, you have the satisfaction of dealing with a company that is a leader in the Independent telephone industry and one that has faithfully served the industry for almost half a century! You have the further satisfaction of knowing that every rebuilding job returned to you is guaranteed to give satisfactory service in every way.

Read the printed guarantee reproduced above. What greater assurance could be given that "Rebuilt by Kellogg" means quality rebuilding of telephone equipment for long, dependable service? This is just another of the many reasons why telephone men all over the Nation look to Kellogg for the best in quality workmanship.

You put your equipment in hands that you can trust when you send it to Kellogg for rebuilding.



# 4 SIMPLE STEPS MAKE IT EASY TO USE

## **KELLOGG** *Rebuilding Service*

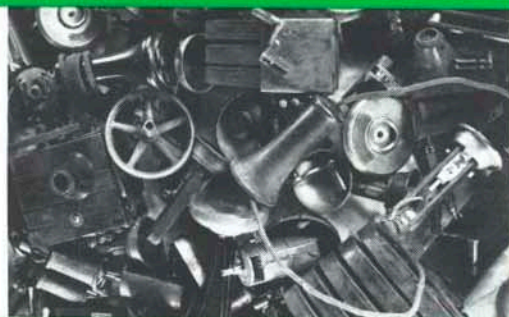
### 1 CHECK THIS CATALOG FOR FULL INFORMATION ON THE KIND OF REBUILDING OR REPAIR JOB YOU NEED.

The following pages contain descriptions and illustrations of the various types of rebuilding and repair jobs. These include most of the standard instruments used by telephone companies throughout the country. Go through the pages and select the type of equipment you need.



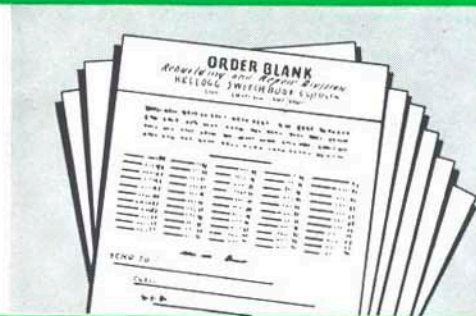
### 2 CHECK THE PARTS YOU CAN SUPPLY FOR THE JOB YOU WANT.

After selecting the equipment you want, check the listing of parts required for that specific rebuilding job against your storeroom stock. If there is any question about the salvage value of any old part, send it along anyway. We will let you know if it can be rebuilt. Our Rebuilding Division can supply missing parts at moderate extra cost.



### 3 TO MAKE IT EASY TO ORDER, KELLOGG SUPPLIES SPECIAL, HANDY ORDER BLANKS.

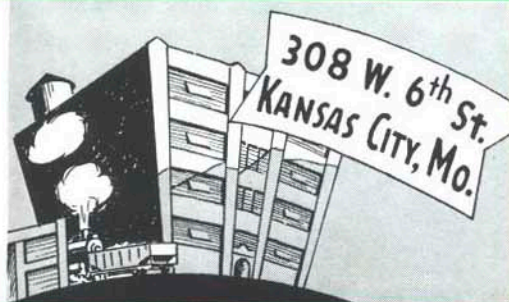
You will find the special Rebuilding Order Blanks supplied with this catalog an easy way to order rebuilding jobs. Use them in connection with the Price List, also supplied with this catalog, to make up your Rebuilding Order. Handle any requests for special features by a note on the blank or by letter. Extra order blanks are available on request.



### *Ship Parts to*

### **KELLOGG REBUILDING PLANT AT KANSAS CITY, MO.**

Pack all parts carefully and ship PREPAID to our Kansas City plant. Avoid loose packing so that generator gears and other parts are not damaged in transit. Include a listing of the contents with each shipment. **DO NOT SEND WOOD TELEPHONE CABINETS OR BOXES** on rebuilding jobs because we furnish brand-new oak cabinets.



**IF WHAT YOU WANT IS NOT LISTED IN THIS CATALOG, WRITE:**

*Rebuilding Division*

**KELLOGG SWITCHBOARD & SUPPLY COMPANY**

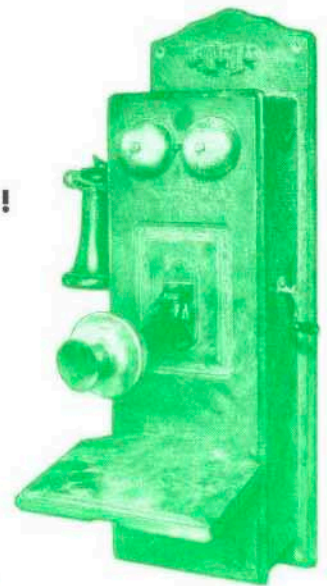
308 WEST SIXTH STREET • KANSAS CITY, MISSOURI





OLD RELICS LIKE THIS . . .

# Rebuilt INTO MODERN PHONES SHOWN BELOW!



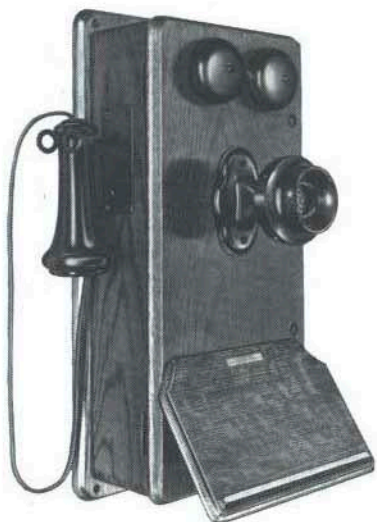
Obsolete or worn out telephones need not be considered a loss. The Kellogg Rebuilding Service restores them to "like-new" condition. All parts are inspected, rebuilt and re-assembled into brand-new oak cabinets and neatly and permanently rewired. All exposed metal parts are stripped and refinished with durable baked, black enamel.

Not only can the parts from your old telephones be rebuilt into like-new operating condition, but they can be made into modern, wall, compact type handset telephones which subscribers like so well. For a moderate extra charge, a Kellogg Masterphone handset with the famous NON-POSITIONAL transmitter can replace the old-type hand receiver and transmitter. New Kellogg cords used on all rebuilt jobs.

**YOU SUPPLY THESE PARTS**

Ringer with Gongs, Generator with Crank and Escutcheon, Induction Coil, Transmitter with Back and Arm, Receiver and Hookswitch with Escutcheon.

*Please do not send in wood cabinets . . . just the parts. Pack parts carefully and securely for shipping.*



### REBUILT JOB NO. 1-A

Magneto Wall Set with New Type all-Bakelite Mouthpiece Unit and NON-POSITIONAL Transmitter

This thoroughly modern telephone is equipped with the famous Kellogg NON-POSITIONAL transmitter described on page 11. The modern one-piece Bakelite Front and mouthpiece unit is a valuable feature of this job.



### REBUILT JOB NO. 1-B

Magneto Wall Telephone with Masterphone Handset

The modern Bakelite Masterphone handset with which this telephone is equipped has the Kellogg NON-POSITIONAL transmitter described on page 11. Subscribers willingly pay more for handset convenience.



### REBUILT JOB NO. 1-C

Magneto Wall Telephone with Standard Receiver and Transmitter

This telephone is the most economical rebuilt job of the compact type telephone. It looks and operates like new, but does not include the NON-POSITIONAL transmitter nor the Masterphone handset as in Jobs 1-A or 1-B.

**NOTE: Refer to the price list for variations in the ringer and generator.**



## HAVE YOUR OLD DESK STANDS AND DESK SET BOXES

# Modernized

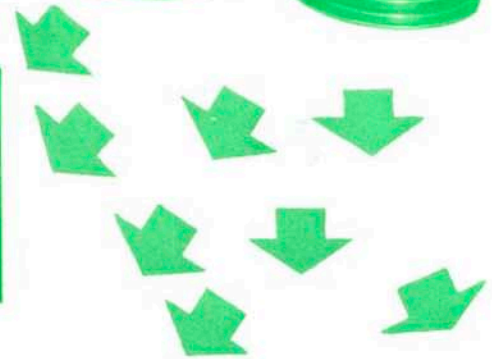
Kellogg rebuilt desk stands are made from your used parts which have been completely dismantled and refinished. All worn parts are replaced where necessary. Transmitters and receivers are completely rebuilt and must pass the same tests and inspection as new Kellogg parts. The desk set boxes consist of completely rebuilt generators, ringers and induction coils, mounted in brand-new oak cabinets. They are completely re-wired and tested for standard operation. All exposed metal parts are refinished with black, baked enamel. New Kellogg cords used on all rebuilt jobs.



**YOU  
SUPPLY  
THESE PARTS**

**Ringer with Gongs, Generator with Crank and Escutcheon, Induction Coil, Desk Stand complete with Receiver and Transmitter.**

*Please do not send in wooden cabinets . . . just the parts. Be sure parts are tightly packed to arrive in safe condition.*



### REBUILT JOB NO. 2-A

**Magneto Wall Telephone with Masterphone Handset**

Convert your old-style desk stand combinations into modern rebuilt handset telephones like this. Equipped with the latest type Kellogg Masterphone handset with the famous NON-POSITIONAL transmitter (See page 11).



### REBUILT JOB NO. 2-B

**Desk Stand with NON-POSITIONAL Transmitter and Magneto Desk Set Box**

This rebuilt desk stand has the one-piece Bakelite front and mouth-piece unit which takes the famous NON-POSITIONAL transmitter. The desk set box with rebuilt ringer, generator and induction coil mounts in new oak cabinet.



### REBUILT JOB NO. 2-C

**Magneto Desk Set Box and Desk Stand with Standard Receiver and Transmitter**

This completely rebuilt desk stand is equipped with the conventional Kellogg transmitter and mouth-piece. The desk set box contains a rebuilt ringer, generator, induction coil and new wiring.

**NOTE: Refer to the price list for variations in the ringer and the generator**



*Old Parts Like These* CAN BE MADE INTO  
**VARIOUS TYPES OF FINE TELEPHONES**

Send in old parts from your obsolete telephones and get back like-new Kellogg rebuilt telephones such as the three wall type magneto sets shown below. The used parts you send in are completely disassembled . . . shorted or open coils are re-wound like new, receiver and generator magnets are re-energized and exposed metal parts are refinished with durable black baked enamel. These parts are then re-assembled in brand new oak cabinets and neatly and permanently wired with new wire. New Kellogg cords are also used on each rebuilt job.

For the most modern sets, at modest additional cost, the old type transmitters and receivers can be replaced by modern Kellogg Masterphone handsets equipped with the patented NON-POSITIONAL transmitter.



**YOU  
 SUPPLY  
 THESE PARTS**

Ringer with Gongs, Generator with Crank and Escutcheon, Induction Coil, Transmitter with Back, Receiver, and Hookswitch.  
*Be sure parts are tightly packed.*



**REBUILT JOB No. 3-A**

Magneto Wall Telephone with Masterphone Handset

The Bakelite Masterphone Handset with which this telephone is equipped has the Kellogg NON-POSITIONAL transmitter described on page 11. Subscribers willingly pay more for handset convenience.



**REBUILT JOB No. 3-B**

Magneto Wall Telephone with Masterphone Handset

Convert your old, unused telephone parts into modern, handset telephones like this. Equipped with the latest type Kellogg Masterphone handset with the famous NON-POSITIONAL transmitter (see page 11).



**REBUILT JOB No. 3-C**

Magneto Wall Telephone with NON-POSITIONAL Transmitter

The patented Kellogg NON-POSITIONAL transmitter fits into the one-piece Bakelite front and mouth-piece unit with which this small, hotel type telephone is equipped. Cabinet and wiring are entirely new.

**NOTE: Refer to the price list for variations in the ringer and generator.**

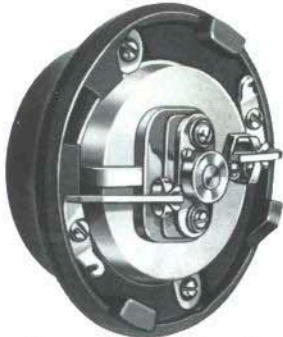




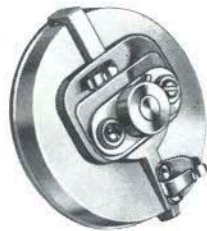
Front view of new all-Bakelite combination front and mouthpiece unit.



Rear view of one-piece transmitter front and mouthpiece unit shows durable construction.



Transmitter front and mouthpiece unit showing NON-POSITIONAL transmitter inserted in position.



The famous capsule type NON-POSITIONAL transmitter unit.

## FOR FINEST TRANSMISSION QUALITIES SPECIFY THE FAMOUS KELLOGG NON-POSITIONAL TRANSMITTER

Kellogg NON-POSITIONAL transmitters are especially designed to give the best transmission under modern operating conditions. Because of the patented, spherical shape of the carbon chamber there can be no "dead" talking positions to limit or restrict subscribers in the way in which the modern telephone must be held. These compact, self-contained NON-POSITIONAL transmitters have also established new, higher standards of transmission efficiency.

*With the new all-Bakelite transmitter front and mouthpiece unit (shown at left), you can standardize on the NON-POSITIONAL transmitter for all types of phones. The NON-POSITIONAL transmitter comes as standard equipment with all Masterphone handsets (illustrated below).*

**AVAILABLE WITH MANY  
REBUILT JOBS . . .**

## **KELLOGG**

**Masterphone Handsets**

**Fit the Face . . . and Give You the  
Finest Transmission and Reception**

Kellogg handsets are of all-Bakelite construction and are equipped with patented NON-POSITIONAL transmitters and bi-polar receivers with cobalt magnets. Transmitters and receiver units are of the self-contained, capsule type. They slip into the housing with ease, and make the necessary electrical connections as they are inserted. There are no cord terminals or screws. The handle is reinforced by molding two heavy conductor bars through the center.

Kellogg Masterphone handsets provide finest transmission and reception, are designed to "fit the face" properly, and can be used on most wall sets to replace old style transmitters and receivers.





## "LIKE-NEW" DESK STANDS FROM OLD OR IDLE PARTS

Any old, discarded or unserviceable desk stand can be rebuilt into like-new condition! This job includes taking the stand apart, reprocessing each piece, adding new parts where necessary, and re-assembling the telephone by regular manufacturing methods. All exposed metal parts are completely refinished and enameled, and with new Bakelite shells and new Kellogg cords the instrument is returned in perfect operating condition.

The Kellogg NON-POSITIONAL transmitter in the new Bakelite front and mouthpiece unit (shown below in Job 5-A) may be used in place of the old style transmitter for maximum transmission and more modern appearance.



### YOU SUPPLY THESE PARTS

Desk Stand complete with Transmitter,  
Receiver and Hookswitch.  
Pack parts carefully and securely for shipping.

### REBUILT JOB NO. 5-A

#### Desk Stand with Dial Blank and NON-POSITIONAL Transmitter

This desk stand is convertible to dial service at any time by simply adding a dial and connecting with a suitable three-conductor desk set box. It is equipped with a one-piece Bakelite front and mouthpiece unit, containing the Kellogg NON-POSITIONAL transmitter.

### REBUILT JOB NO. 5-B

#### Desk Stand with Dial Blank and Standard Transmitter

This desk stand is the same as No. 5-A except it is equipped with a standard Kellogg transmitter like that shown on the right.

### REBUILT JOB NO. 5-C

#### Desk Stand with Standard Transmitter

This center pedestal type desk stand is equipped with a regular style transmitter and mouthpiece. New Kellogg cords are used on all rebuilt telephones.

### REBUILT JOB NO. 5-D

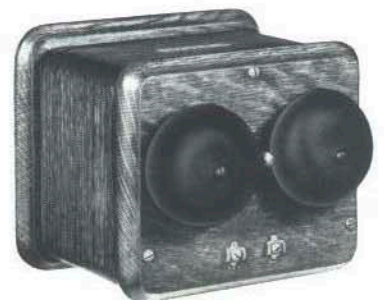
#### Desk Stand with NON-POSITIONAL Transmitter

This desk stand is the same as the No. 5-C except it is equipped with the new style all-Bakelite mouthpiece and NON-POSITIONAL transmitter as shown on Job 5-A.

## HAVE OLD RINGERS REBUILT INTO EFFICIENT EXTENSION BELLS . . .



Your old ringer, with gongs and clapper guard, can be inexpensively rebuilt into a good-looking, compact, efficient, like-new extension bell. This extension bell comes with a new, oak cabinet with the ringer and two binding posts mounted inside. The ringer coils are completely rewound with the highest grade copper wire and adjusted for efficient operation. The gongs are finished in heavy black enamel. Two binding posts are located on the front of the cabinet for convenience. Size: 5½ inches high, 6¾ inches wide, 4¾ inches deep. A condenser can be furnished when specified.





## THERE'S PLENTY OF LIFE IN YOUR OLD DISCARDED TELEPHONES WHEN KELLOGG CRAFTSMEN REBUILD THEM INTO MODERN PHONES SHOWN BELOW

Put your old, discarded or unserviceable telephones back in service by having them rebuilt by Kellogg. The steel cabinets and parts from old, enclosed gong type common battery sets can be rebuilt into either of the sets shown below. They will be returned "like new" at reasonable prices. The wall sets can be furnished with wiring for either the regular booster circuit or for the superior Kellogg TRIAD circuit. For maximum transmission and side tone reduction, the simple, highly efficient TRIAD circuit is recommended.

The sets you send in are completely disassembled . . . all operating parts are tested and rebuilt . . . metal parts, including the steel housings, are stripped down to the bare metal and beautifully refinished with black, baked enamel.



**YOU  
SUPPLY  
THESE PARTS**

**Steel Wall Telephone with the following parts: Ringer with Gongs, Transmitter with Back, Condenser, Hookswitch, Receiver, Induction Coil, Cabinet and Backplate.**

*Be sure parts are tightly packed.*



**REBUILT JOB No. 7-A**  
Common Battery Wall Telephone with  
Masterphone Handset

This modern, steel wall telephone with enclosed gongs is equipped with the Kellogg Masterphone handset with capsule type receiver and patented NON-POSITIONAL transmitter. This set assures the best transmission and reception, and the greatest convenience to subscribers.

### NOTE: TRIAD or Booster Circuit

These common battery telephones can be furnished with the TRIAD anti-side tone circuit or with the regular booster circuit. Specify on each order the type of circuit desired.

The Kellogg TRIAD circuit represents a great advance in gaining top



**REBUILT JOB No. 7-C**  
Common Battery Wall Telephone with  
Hand Receiver

This enclosed gong steel wall telephone is completely rebuilt and refinished down to the last detail. It performs as a new telephone with new receiver shell, rebuilt transmitter and receiver, new Kellogg cord, new wiring, etc. Its appearance is comparable to that of a new telephone.

**REBUILT JOB No. 7-B**  
Common Battery  
Wall Telephone with  
NON-POSITIONAL  
Transmitter

This is the same as Job 7-C but includes the new all-Bakelite front and mouthpiece unit and NON-POSITIONAL transmitter described on p. 11.

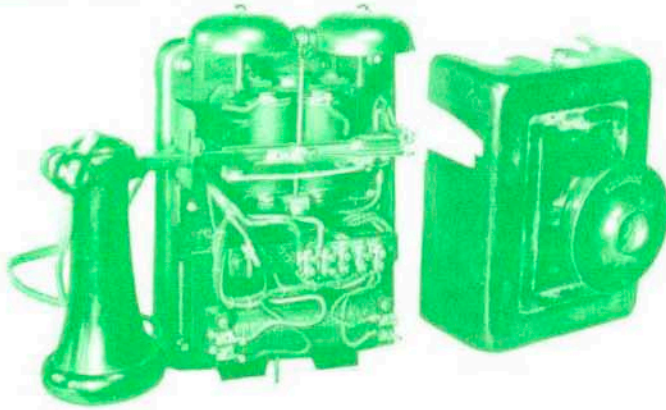
transmission and reception by its virtual elimination of extraneous sounds that are picked up through the receiver in the ordinary telephone circuit.

### Ringer Variations

Orders should specify whether straight line, biased or harmonic ringers are desired. If harmonic, tell what frequency is wanted.



## COMMON BATTERY STEEL WALL SETS (EXPOSED GONG TYPE)



**YOU  
SUPPLY  
THESE PARTS**

Steel Wall Telephone with these parts: Ringer with Gongs, Transmitter with Back, Receiver, Hookswitch, Induction Coil, Condenser, Cabinet and Backplate.

*Pack parts carefully for shipping.*



**REBUILT JOB No. 8-A**  
Common Battery Wall Set with  
Hand Receiver

This steel wall telephone is completely rebuilt and refinished down to the last detail. It performs as a new telephone, with a new receiver shell, rebuilt transmitter and receiver, new Kellogg cord, etc. Its appearance is comparable to that of a new telephone.

**REBUILT JOB No. 8-B**  
Common Battery Wall Set with  
NON-POSITIONAL Transmitter

When desirable to have a conventional steel wall set which can utilize the famous Kellogg NON-POSITIONAL transmitter, order Job No. 8-B. This is the same as Job 8-A but includes the new all-Bakelite front and mouthpiece unit and the NON-POSITIONAL transmitter described on page 11.



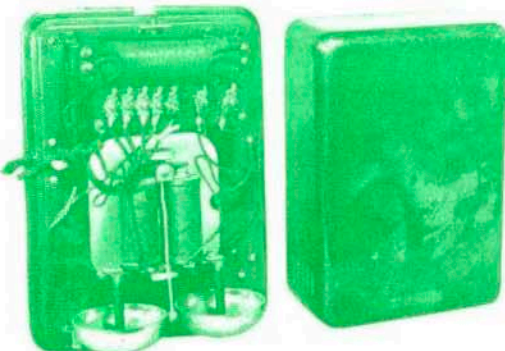
**REBUILT JOB No. 8-C**  
Common Battery Wall Set with  
Masterphone Handset

This wall set comes equipped with Masterphone handset with the NON-POSITIONAL transmitter described on page 11. It assures the finest transmission and reception.

**NOTE: Ringers**

Orders should specify whether straight line, biased or harmonic ringers are desired. If harmonic, tell what frequency is wanted.

## COMMON BATTERY STEEL DESK SET BOXES (ENCLOSED GONG TYPE)



**REBUILT JOB No. 9-A**  
Common Battery Desk Set Box  
(Booster Circuit)

Equipped for use with three-conductor telephones wired for the booster circuit.

**REBUILT JOB No. 9-B**  
Common Battery Desk Set Box  
(TRIAD Circuit)

This steel desk set box is equipped for use with four-conductor telephones with the Kellogg TRIAD circuit.



**REBUILT JOB No. 9-C**  
Common Battery Desk Set Box

For use with two conductor telephones or as an extension bell, this desk set box is not equipped with an induction coil.

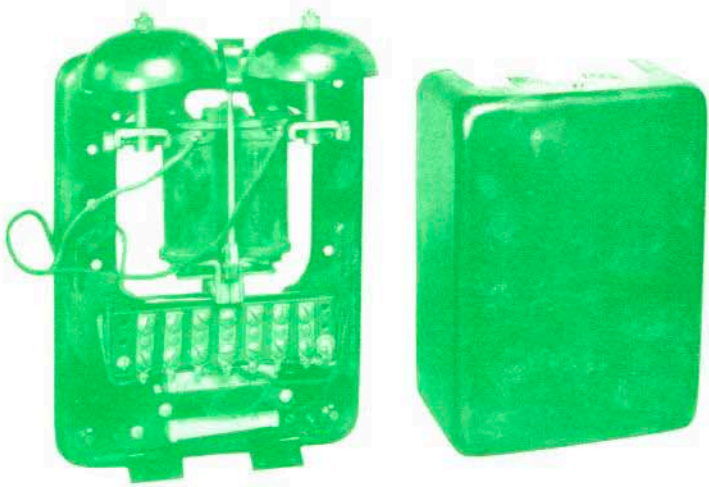
**YOU  
SUPPLY  
THESE PARTS**

Steel Desk Set Box with these parts: Ringer with Gongs, Condenser, Cabinet with Backplate.

*Include induction coil when ordering Jobs 9-A or 9-B.*



## COMMON BATTERY DESK SET BOXES (EXPOSED GONG TYPE)



**YOU SUPPLY THESE PARTS**

Steel Desk Set Box with these parts: Ringer with Gongs, Condenser, Induction Coil, Cabinet with Backplate. Include an induction coil when ordering Jobs 10-B or 10-C.



### REBUILT JOB No. 10-A

#### Common Battery Steel Desk Set Box

For use with two-conductor telephones or as an extension bell, this desk set box is not equipped with an induction coil.

### REBUILT JOB No. 10-B

#### Common Battery Steel Desk Set Box (Booster Circuit)

For use with three-conductor booster circuit telephones, this desk set box is equipped with an induction coil, condenser and ringer.

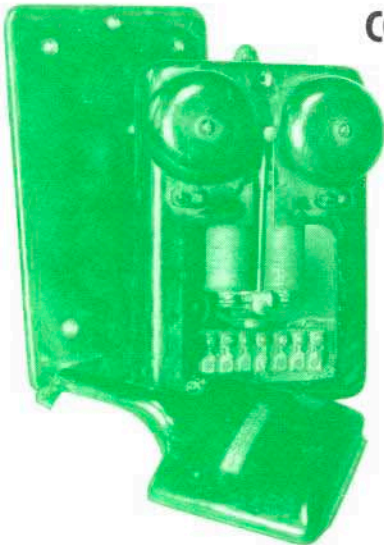
### REBUILT JOB No. 10-C

#### Common Battery Steel Desk Set Box (TRIAD Circuit)

For use with four-conductor TRIAD circuit telephones, this desk set box is equipped with an induction coil, condenser and ringer.

**NOTE: Ringers**—Orders should specify whether straight line, biased or harmonic ringers are desired. If harmonic, tell what frequency is wanted.

## COMMON BATTERY STEEL DESK SET BOXES (EXPOSED GONG TYPE)



**YOU SUPPLY THESE PARTS**

Steel Desk Set Box with these parts: Ringer with Gongs, Condenser, Induction Coil, Cabinet and Backplate.

Pack parts carefully.

### REBUILT JOB No. 11-A

#### Common Battery Steel Desk Set Box

For use with two-conductor telephones, this type of desk set box contains a 1 M.F. condenser.

### REBUILT JOB No. 11-B

#### Common Battery Steel Desk Set Box (Booster Circuit)

For use with three-conductor telephones, this type of desk set box is wired for the standard booster circuit.

### NOTE: Ringers

Orders should specify whether straight line, biased or harmonic ringers are desired. If harmonic, tell what frequency is wanted.



THE Kellogg Rebuilding Plan gives special consideration to transmitters, receivers, ringers, generators, coils and other of the major apparatus items, because efficiency of the entire telephone system and satisfaction of the subscribers depend so much upon the reliability of these highly important components.

### TRANSMITTER REBUILDING

Kellogg rebuilds all types of transmitters, whether they be for local battery, for common battery, or for universal use. These rebuilt transmitters are like new, both from the standpoint of appearance and quality of transmission.

When these transmitters come into the Kellogg Rebuilding Plant they are taken apart and the brass fronts and bridges go to our finishing department for stripping. The bare, clean brass is then finished in baked, black enamel. After the fronts are refinished, they are equipped with new carbon chambers or electrodes with the right type of Kellogg carbon for the transmitter. New Bakelite mouthpieces are furnished wherever necessary. These rebuilt transmitters must pass the same rigid tests and inspection as new Kellogg transmitters.



### GENERATOR REBUILDING

Send your old, worn out generators to Kellogg for rebuilding into "like-new" condition. These generators are tested . . . armatures are rewound where necessary . . . exposed metal parts are refinished . . . bearings are renewed if worn . . . insulation is replaced and contacts are renewed.

When parts are reassembled, generators are thoroughly tested, shunts and gears are adjusted and voltage output is checked.



### RECEIVER REBUILDING

Kellogg also does an outstanding job of rebuilding your old receivers. Here are the high spots of what happens to receivers sent to Kellogg for rebuilding . . . the receiver is completely taken apart . . . all parts are cleaned . . . magnets are recharged . . . coils are rewound if necessary . . . the old diaphragm is replaced with new . . . the highly important relationship between pole pieces and diaphragm is carefully checked and adjusted for proper diaphragm clearance (a point often overlooked). A new Kellogg moisture-proof receiver cord is furnished and the rebuilt receiver is checked and tested for operation efficiency.





From a service standpoint, a weak ringer or a stripped generator gear left without attention can do immeasurable harm to the reputation of a telephone exchange.

## COIL REBUILDING

When any of your coils . . . ringer coils, armatures, drop coils, induction coils, etc. . . . are rewound by Kellogg you can be sure that the finished job meets the most rigid specifications. The wire used is of the correct size to assure that the rebuilt coil will have the proper resistance and electrical characteristics to perform as new.

It is economical and wise to have your coils rebuilt by Kellogg where experience, facilities and quality controls guarantee utmost satisfaction.



## ENAMELLING & REFINISHING

Kellogg's modern enamelling and refinishing department turns out rebuilt steel wall telephones, desk set boxes and desk stands that really look like new. In addition to steel telephones and cabinets, many piece parts such as ringer gongs and hook-switch escutcheons that are used with wood cabinet sets are completely refinished for long wearing qualities as well as beautiful appearance.

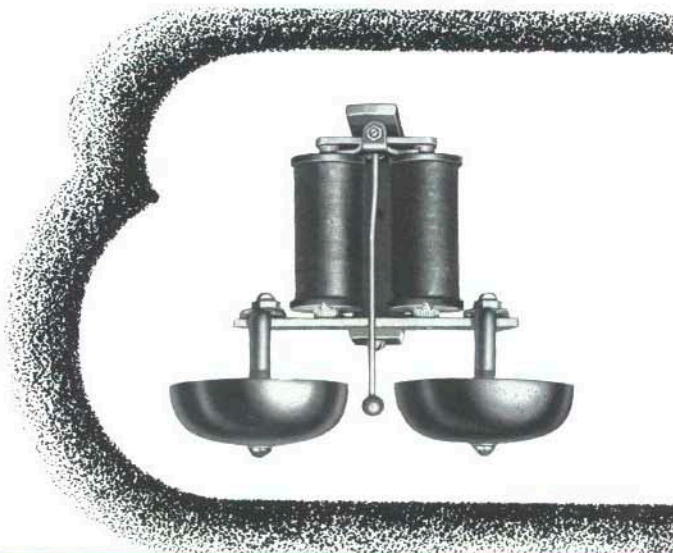
This renewing process includes the complete removal of the old finish right down to the bare metal, enamelling in black, and baking to insure a hard, durable, velvet-smooth finish.

Kellogg uses modern, efficient equipment from the tumblers used to remove the old finish from the parts you send in to the late-type ovens used to bake the enamel.

## RINGER REBUILDING

Ringers are returned to you rebuilt into "like-new" condition. They not only look like brand new ringers but they operate like brand new ringers. The ringer coils are rewound with new copper wire when necessary, the magnets are recharged, the armature is adjusted and the gongs and other metal parts are cleaned and refinished in bright, black baked enamel. Thorough testing completes the job.

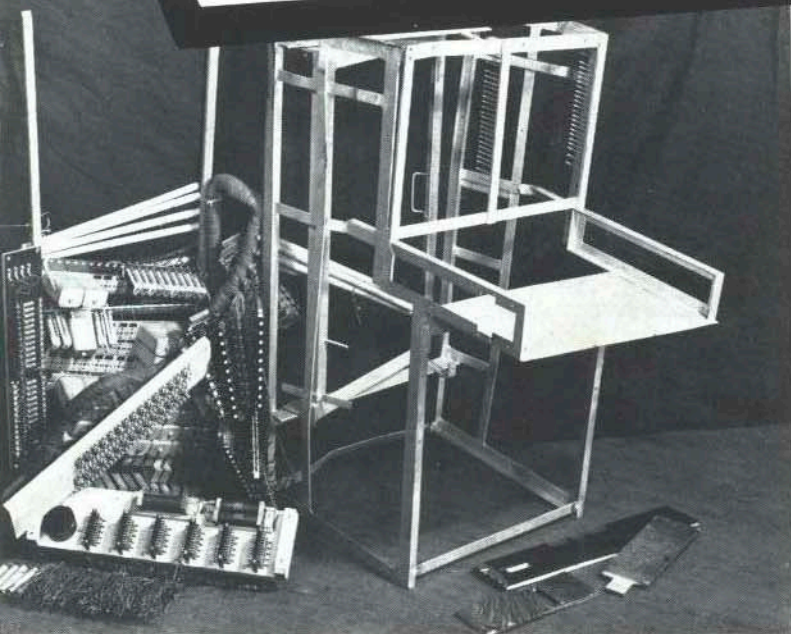
Please specify the resistance to which coils are to be rewound . . . they may be 1000, 1600 or 2500 ohms for straight line ringing or for 30, 42, 54, 60, 16 $\frac{2}{3}$ , 33 $\frac{1}{3}$ , 50 or 66 $\frac{2}{3}$  cycle harmonic ringing. 1000, 1500 or 2500 ohm biased ringers are also available.





**MORE VITAL NOW THAN EVER BEFORE—**

# **KELLOGG** Switchboard Repairing



**BEFORE and AFTER**—The switchboard frame and pile of parts shown in the picture above were sent in to Kelloggs for rebuilding. The Kellogg Rebuilding Service went to work and returned the beautiful PBX shown below.



The Kellogg Switchboard Rebuilding Service is doing an extremely important job. With wartime restrictions on the purchase of new equipment, existing equipment must do the job. Factory rebuilding of old, obsolete or unserviceable switchboards is the logical—and virtually the only—answer to the problem of keeping telephone service at the high standard essential for wartime communication.

When your switchboard rebuilding job is done by Kellogg you know that the board returned to you is guaranteed to give satisfactory service in every way. You put your equipment in hands that you can trust when you send it to Kellogg for rebuilding.

In rebuilding your switchboards and switchboard parts, full use is made of Kellogg's rich store of engineering and manufacturing experience. This assures a job that will fully measure up to the same high standards established and maintained for the telephone industry by Kellogg since 1897.

## **WHAT HAPPENS TO YOUR SWITCHBOARD WHEN IT IS REBUILT BY KELLOGG**

Send your old switchboard to Kellogg and get it back in like-new condition. It not only will look like new, but it will operate like new.

Kellogg goes all the way in rebuilding any piece of equipment whether it's a relay or a complete switchboard. Nothing is left undone to put the equipment in the finest condition. A brand-new cabinet is supplied or if it is in good enough condition, your old cabinet is completely and beautifully refinished. In addition to refinishing woodwork, all exposed metal parts are stripped down and refinished in rich, black, baked enamel.

In addition to making your old board new and attractive looking, all operating parts are examined and tested, all parts showing wear or defects are replaced and other parts are completely remanufactured.

Switchboard transmitters are repaired and renewed, operators' receivers are rebuilt and rewound, new Kellogg moisture-proof cords are supplied, drops and jacks and switchboard keys are put into like-new condition.

In short, the whole board is like new when it is returned to you. For details of Kellogg's procedure in rebuilding individual parts see the next page.



# SEND SWITCHBOARD PARTS FOR COMPLETE REBUILDING

**I**N addition to rebuilding complete switchboards, Kellogg rebuilds individual switchboard parts. Send in your old, unused or unusable switchboard keys, line jacks, strips of drops and jacks, operator's transmitters and receivers, relays . . . everything that goes to make up a switchboard . . . and get back "like-new" apparatus.



## REBUILDING OPERATOR'S SETS

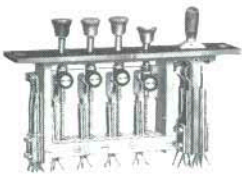
Operator's sets of all kinds . . . head band receivers with breastplate type, suspended type or arm type transmitters . . . are rebuilt by Kellogg and returned to you as good as new. This rebuilding is complete. Your equipment is not only electrically perfect but it is refinished and polished to have the beautiful appearance of new sets.

After complete disassembly of your old transmitter, cleaning and replacement of inefficient parts, the transmitter is reassembled with a new carbon chamber or electrodes with the right kind of Kellogg carbon. A new Bakelite mouthpiece is furnished wherever necessary. At slight additional cost the new efficient Kellogg NON-POSITIONAL transmitter with the modern wide-opening transmitter front will be furnished.

Receivers also are completely taken apart, all parts are cleaned, magnets are recharged, coils are rewound if necessary and the diaphragm is replaced with a new one. The highly important relationship between pole pieces and the diaphragm is carefully checked and adjusted for proper clearance (a point often overlooked).

The receiver head band, the breastplate, transmitter and receiver are all completely refinished, a new neck band is supplied, new Kellogg cords are connected and the entire operator's set is tested for operating efficiency.

When ordering be sure to state whether the transmitters are for magneto or common battery switchboards.



## REBUILDING SWITCHBOARD KEYS

Your old switchboard keys, whether they be cam keys, two or four party keys or push button keys are rebuilt into brand new condition by the Kellogg Rebuilding Service.

The escutcheon or mounting plate is stripped down and refinished in black baked enamel and defective springs, contacts and insulators are replaced. Everything is done to put your keys into first class condition.

## REBUILDING RELAYS

The Kellogg Rebuilding Service puts all types of telephone relays in "like-new" condition—to provide positive, unfailing operation under the severe service conditions which relays must meet in telephone service.

Mounting plate, cover and frame are stripped down to the bare metal and refinished with satin-smooth, black, baked enamel. Springs and contacts are checked and are replaced if defective. Armatures are rewound if necessary and relay adjustment is carefully checked. The assembled relay is then tested to insure 100% performance.

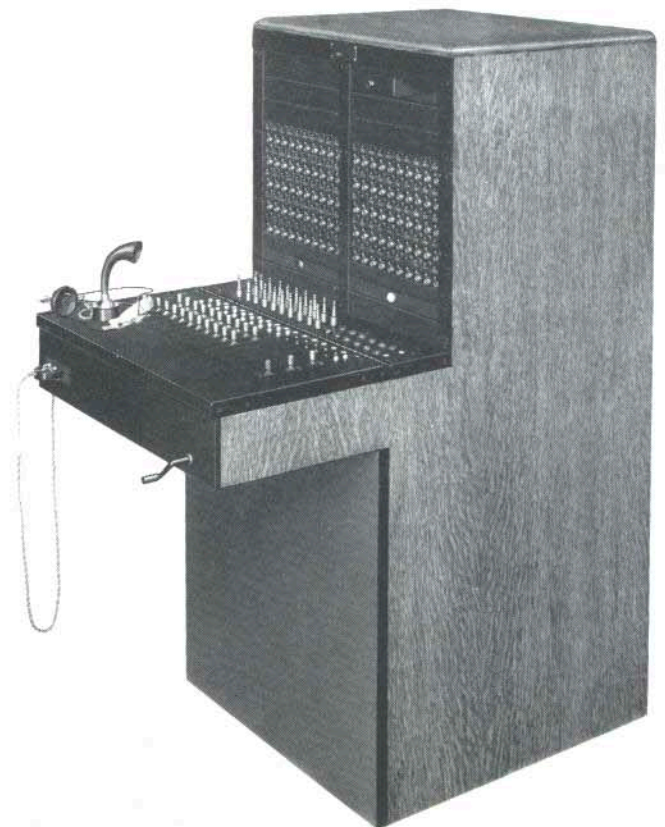


## REBUILDING DROPS AND JACKS

Send in your old strips of drops and jacks for complete renewal. They are

completely disassembled in Kellogg's shop, escutcheons, drop shutters and other exposed parts are refinished, defective springs and coils are replaced and contacts are adjusted. The parts are then reassembled and the rebuilt units are tested to pass the same rigid inspection and tests as brand new Kellogg drops and jacks.

How well your switchboard will operate depends upon how well the parts work together to give smooth, satisfactory service. Through building best performance into all component parts, whether new or rebuilt, Kellogg insures that your switchboard will operate perfectly.







## CONTENTS

What "Rebuilt by Kellogg" Means.....	2 to 4	Desk Stands and Extension Bells.....	12
How Kellogg Rebuilds Your Equipment.....	5	Common Battery Telephones .....	13 and 14
Kellogg Rebuilding Guarantee .....	6	Common Battery Desk Set Boxes.....	14 and 15
4 Simple Steps Make it Easy to Use Kellogg Rebuilding Service .....	7	Rebuilding Telephone Parts .....	16 and 17
Magneto Telephones and Desk Set Boxes.....	8 to 10	Switchboard Repairing and Rebuilding.....	18
Kellogg NON-POSITIONAL Transmitters and Masterphone Handsets .....	11	Rebuilding Switchboard Parts.....	19

## CUSTOMER INFORMATION

### Guarantee

Through the years, Kellogg has established with its customers the reputation of selling goods that give a full measure of satisfaction. The Kellogg Company stands behind every rebuilding, repairing and remanufacturing job done for you. A straight-forward simple guarantee (shown on page 6) provides full assurance that you can depend on Kellogg-rebuilt equipment. It will be right in every way—in performance, durability and appearance!

### Terms

Terms are 30 days net from date of invoice. Charge accounts are invited. New customers who may not be rated by the commercial agencies can help assure prompt service by sending credit information with initial orders. Sight draft or C.O.D. orders receive the same immediate attention as those covered by established charge accounts.

### Orders

To avoid errors or delays, rebuilt job numbers as well as a description of each article should appear on the order. Possibilities of delay are decreased when complete information is given in the order.

### Shipments

Always specify whether goods are to be shipped via freight, express or parcel post. When shipment is desired by freight, please specify the routing.

### Claims for Shortage, Breakage or Non-Delivery

All claims for breakage, damages and non-delivery should be made without delay to the transportation company handling the shipment. We will gladly assist in presenting these claims.

Receipts from the transportation company specify that shipments are received in good condition, therefore shipments must be checked as they are received. Always have the agent of the transportation company make a notation on the bill of lading specifying any damage or shortage.

If packages or cases are in apparent good order, but contents are found to be damaged upon opening, call the freight agent or adjuster and have him mark the freight bill to show the concealed damage.

Claims for damage or non-delivery of parcel post shipments should be made to us as we insure this material and make all adjustments.

### Returning Goods

Please notify us before making any return shipments. This will help to make the proper adjustment without delay.

The liability of the Kellogg Company is limited in all cases to the value of the goods claimed to be defective.

*Rebuilding Division*

**KELLOGG SWITCHBOARD & SUPPLY CO.**  
308 W. SIXTH ST. KANSAS CITY, MO.





# PRICE LIST NO. 764

Applying to  
**KELLOGG REBUILDING AND REPAIR SERVICE**  
 CATALOG NO. 300

## HOW KELLOGG REBUILDS YOUR EQUIPMENT IN "LIKE-NEW" CONDITION

"Rebuilt by Kellogg" means **REBUILT** in every sense of the word. For Kellogg goes all the way in rebuilding any piece of equipment, whether it's a telephone receiver or a complete switchboard. Any part that requires replacement is replaced. Other parts are completely remanufactured "like-new". Nothing is left undone to put the equipment that you send us in the finest operating and physical condition.

In rebuilding your telephones and equipment, our rebuilders make full use of Kellogg's rich store of engineering and remanufacturing experience. This means that you are always assured of a job that actually measures up to the same high efficiency standards established for the telephone industry by Kellogg since 1897.

### TELEPHONES AND DESK SET BOXES REBUILT BY KELLOGG

The prices shown below for Rebuilt Telephones and Desk Set Boxes are effective when the customer supplies the old or unused parts specified in the Kellogg Rebuilding Catalog, pages 8 to 15. If there is any question about the salvage value of an old part, send it along anyway. We will let you know if it can be rebuilt. Missing parts can be supplied at moderate extra cost.

How Kellogg rebuilds your equipment in "like-new" condition is fully described in the Rebuilding Catalog No. 300.

Job No.	Description	Quantity	Price Each
1-A	Magneto Wall Set with Bakelite Mouthpiece Unit and NON-POSITIONAL Transmitter	1 to 9	\$9.65
		10 to 49	8.65
		50 or More	8.15
1-B	Magneto Wall Telephone with Masterphone Handset	1 to 9	13.35
		10 to 49	11.75
		50 or More	11.25
1-C	Magneto Wall Telephone with Standard Receiver and Transmitter	1 to 9	8.75
		10 to 49	8.15
		50 or More	7.75
2-A	Hotel Type Magneto Wall Telephone with Masterphone Handset	1 to 9	13.35
		10 to 49	11.75
		50 or More	11.25
2-B	Desk Stand with NON-POSITIONAL Transmitter and Magneto Desk Set Box	1 to 9	9.75
		10 to 49	9.05
		50 or More	8.75
2-C	Magneto Desk Set Box and Desk Stand with Standard Transmitter	1 to 9	9.25
		10 to 49	8.75
		50 or More	8.25
3-A	Hotel Type Magneto Wall Telephone with Masterphone Handset	1 to 9	13.25
		10 to 49	11.75
		50 or More	11.25
3-B	Magneto Wall Telephone with Masterphone Handset (compact type telephone)	1 to 9	13.25
		10 to 49	11.75
		50 or More	11.25
3-C	Hotel Type Magneto Wall Telephone with NON-POSITIONAL Transmitter	1 to 9	9.55
		10 to 49	8.55
		50 or More	8.10

Job No.	Description	Quantity	Price Each
5-A	Desk Stand with Dial Blank, NON-POSITIONAL Transmitter and Bakelite Mouthpiece	1 to 9	\$4.95
		10 to 49	4.20
		50 or More	3.75
5-B	Desk Stand with Dial Blank and Standard Transmitter	1 to 9	3.95
		10 to 49	3.65
		50 or More	3.55
5-C	Desk Stand (center pedestal type) with Standard Transmitter	1 to 9	3.75
		10 to 49	3.55
		50 or More	3.45
5-D	Desk Stand (center pedestal type) with NON-POSITIONAL Transmitter and Bakelite Mouthpiece	1 to 9	4.75
		10 to 49	4.10
		50 or More	3.65
7-A	Common Battery Steel Wall Telephone with Masterphone Handset — TRIAD Circuit	1 to 9	13.45
		10 to 49	12.95
		50 or More	12.75
	Common Battery Steel Wall Telephone with Masterphone Handset — Booster Circuit	1 to 9	12.95
		10 to 49	12.55
		50 or More	12.25
7-B	Common Battery Steel Wall Telephone with NON-POSITIONAL Transmitter and Bakelite Mouthpiece	1 to 9	8.75
		10 to 49	8.45
		50 or More	8.15
7-C	Common Battery Steel Wall Telephone with Hand Receiver and Standard Transmitter	1 to 9	7.75
		10 to 49	7.45
		50 or More	7.15
8-A	Common Battery Steel Wall Set with Hand Receiver — Exposed Gongs	1 to 9	7.55
		10 to 49	7.25
		50 or More	6.95
8-B	Common Battery Steel Wall Set with NON-POSITIONAL Transmitter and Bakelite Mouthpiece—Exposed Gongs	1 to 9	8.55
		10 to 49	8.25
		50 or More	7.95
8-C	Common Battery Steel Wall Set with Masterphone Handset — Exposed Gongs	1 to 9	12.80
		10 to 49	12.45
		50 or More	12.10

*Rebuilding  
 Division*

**KELLOGG SWITCHBOARD & SUPPLY COMPANY**  
 308 WEST SIXTH STREET • KANSAS CITY, MISSOURI



## TELEPHONES AND DESK SET BOXES (Cont.)

Job No.	Description	Quantity	Price Each
9-A	Common Battery Steel	1 to 9	\$4.55
	Desk Set Box — Enclosed	10 to 49	4.25
	Gongs	50 or More	4.05
9-B	Common Battery Steel	1 to 9	5.05
	Desk Set Box (TRIAD Circuit) — Enclosed	10 to 49	4.75
	Gongs	50 or More	4.55
9-C	Common Battery Steel Desk Set Box — Enclosed Gongs		3.55
10-A	Common Battery Steel	1 to 9	3.55
	Desk Set Box — Exposed	10 to 49	3.45
	Gongs	50 or More	3.25
10-B	Common Battery Steel	1 to 9	4.45
	Desk Set Box (Booster Circuit) — Exposed	10 to 49	4.15
	Gongs	50 or More	3.95
10-C	Common Battery Steel	1 to 9	4.55
	Desk Set Box (TRIAD Circuit) — Exposed	10 to 49	4.25
	Gongs	50 or More	4.05
11-A	Common Battery Steel	1 to 9	3.55
	Desk Set Box — Exposed	10 to 49	3.45
	Gongs	50 or More	3.25
11-B	Common Battery Steel	1 to 9	4.45
	Desk Set Box (Booster Circuit) — Exposed	10 to 49	4.15
	Gongs	50 or More	3.95

### Generators and Ringers

**Generators:** Your rebuilt telephones may be returned to you with either three or five bar generators. However, to get a five bar generator you must send in an old five bar generator.

**Ringers:** Please advise whether the ringer should have a resistance of 1,000, 1600 or 2500 ohms.

### Extension Bells

Described on page 12 of the Rebuilding Catalog. Prices on application.

## REBUILDING TELEPHONE PARTS

The prices shown below are effective when the customer supplies the old or unused part to be rebuilt.

### Rebuilding Kellogg Transmitters (Type 64)

These rebuilt transmitters must pass the same rigid test and inspection as new Kellogg transmitters. This rebuilding process is described on page 16 of the Kellogg Rebuilding Catalog.

Quantity	Price Each	Quantity	Price Each
1 to 9	\$1.05	250 to 499	\$.80
10 to 99	.95	500 or More	.75
100 to 249	.85		

### Rebuilding Receivers

Kellogg does an outstanding job of rebuilding your old receivers. The steps included in this job are shown on page 16 of the Kellogg Rebuilding Catalog.

	Quantity	Quantity	Quantity
Price Each	1 to 9	10 to 49	50 or More
	\$1.25	\$1.15	\$1.05

## Rebuilding Generators

Kellogg's procedure in rebuilding generators is described on page 16 of the Kellogg Rebuilding Catalog.

Description	Quantity	1 to 9	10 to 49	50 or More
3-Bar, Price Each . . .		\$2.75	\$2.65	\$2.55
4-Bar and 5-Bar, Each		3.25	3.15	3.05

## Rewinding Coils

When any of your coils . . . ringer coils, induction coils, drop coils, etc. . . are rewound by Kellogg, you can be sure that the finished job meets the most rigid specifications. The wire used is of the correct size to assure that the rewound coil will have the proper resistance and electrical characteristics to perform as new.

Description	Quantity	1 to 9	10 to 49	50 or More
Induction Coils, Price Each \$		.65	.55	.45
500-Ohm Ringer Coils, Each		.60	.55	.45
800-Ohm Ringer Coils, Each		.75	.70	.65
2150-Ohm Ringer Coils, Each		.70	.65	.55
100-Ohm Drop Coils, Each		.65	.60	.55
500-Ohm Drop Coils, Each		.70	.65	.60
1000-Ohm Drop Coils, Each		.85	.80	.75

## Enamelling

This renewing process includes the complete removal of the old finish right down to the bare metal, enamelling in black, and baking to insure a hard, durable, velvet-smooth finish. Described on page 17, Kellogg Rebuilding Catalog.

Description	Quantity	1 to 9	10 to 49	50 or More
Disassembled Parts of a Complete Desk Stand . . .		\$1.25	\$1.15	\$1.05
Disassembled Parts of Desk Set Boxes . . . . .		.95	.90	.85

## Ringer Rebuilding

Described on page 17, Kellogg Rebuilding Catalog. Price on request.

## SWITCHBOARD REPAIRING AND REBUILDING

Described on page 18 of the Kellogg Rebuilding Catalog. Prices furnished on request.

## REBUILDING SWITCHBOARD PARTS

The prices shown below are effective when the customer supplies the old or unused parts to be rebuilt. Procedures followed in rebuilding these parts are described on page 19 of the Kellogg Rebuilding Catalog.

### Operator's Sets

Prices furnished on request.

### Switchboard Keys

Front and Back with Escutcheon, Each . . . . . \$2.45

### Relays

Prices furnished on request.

### Drops and Jacks

All Kinds Rebuilt, Each . . . . . \$1.95

## NOTE

Terms are 30 days net from date of invoice. Prices are subject to change without notice.



# REBUILDING AND REPAIR ORDER

## KELLOGG SWITCHBOARD AND SUPPLY COMPANY

308 WEST SIXTH STREET

KANSAS CITY, MISSOURI

SOLD TO \_\_\_\_\_

NO. \_\_\_\_\_ SALESMAN \_\_\_\_\_

SHIP TO \_\_\_\_\_

CUSTOMER'S NO. \_\_\_\_\_ DATE OF ORDER \_\_\_\_\_

SHIP BY { FREIGHT . . .   
EXPRESS . . .   
PARCEL POST  CAN WE SHIP PARTIAL? \_\_\_\_\_  
TERMS \_\_\_\_\_

THIS ORDER IS SUBJECT TO KELLOGG COMPANY'S ACCEPTANCE. LATEST PREVAILING PRICES TO GOVERN ALL ITEMS.

QUANTITY	CODE LIST OR TRADE NO.	DESCRIPTION OF GOODS	PRICE	AMOUNT

### IMPORTANT

- 1 When sending in used instruments or parts which are to be re-operated, be sure to attach a list of all the items being shipped.
- 2 Wherever possible show catalog numbers from the Kellogg Rebuilding and Repair Catalog of the jobs you want . . . or explain fully and give as complete a description as possible of the work required.
- 3 Take special care to pack all instruments and parts securely so that none will be damaged in transit. Ship cheapest way.
- 4 Address your material for Rebuilding and Repair to:

**KELLOGG SWITCHBOARD & SUPPLY COMPANY**  
308 W. SIXTH STREET, KANSAS CITY, MO.

### C E R T I F I C A T I O N PREFERENCE RATING AA-1 ALLOTMENT NUMBER MRO-U

"The undersigned purchaser certifies, subject to the penalties of section 35(a) of the United States Criminal Code, to the seller and to the War Production Board, that, to the best of his knowledge and belief, the undersigned is authorized under applicable War Production Board regulations or orders to place this delivery order, to receive the item(s) ordered for the purpose for which ordered and to use any preference rating or allotment number or symbol which the undersigned has placed on this order."

NAME OF PURCHASER \_\_\_\_\_

ADDRESS \_\_\_\_\_

BY \_\_\_\_\_

Signature and Title of Duly Authorized Officer

DATE \_\_\_\_\_