



KELLOGG MASTERPHONES, 1947

Kellogg Masterphone 1000 series sales brochure produced in 1947 (from the content and the logo) and promotes this line of telephone sets.

From the collection of Mike Neale.

Adobe Document Produced by Mike Neale, Member of
Antique Telephone Collectors Association US
Telephone Collectors International US
Telecom Heritage Group UK

www.kelloggtelephone.com
www.redbartelephone.com

Adobe Document Contents Copyright 2007, Mike Neale, Midland, Texas, USA



www.atcaonline.com



www.telephonecollectors.org



www.thg.org.uk

COMPARE THE

Masterphone



FOR
EASY INSTALLATION
LOW MAINTENANCE
SUBSCRIBER APPROVAL
DEPENDABLE OPERATION

A Masterpiece of Efficiency



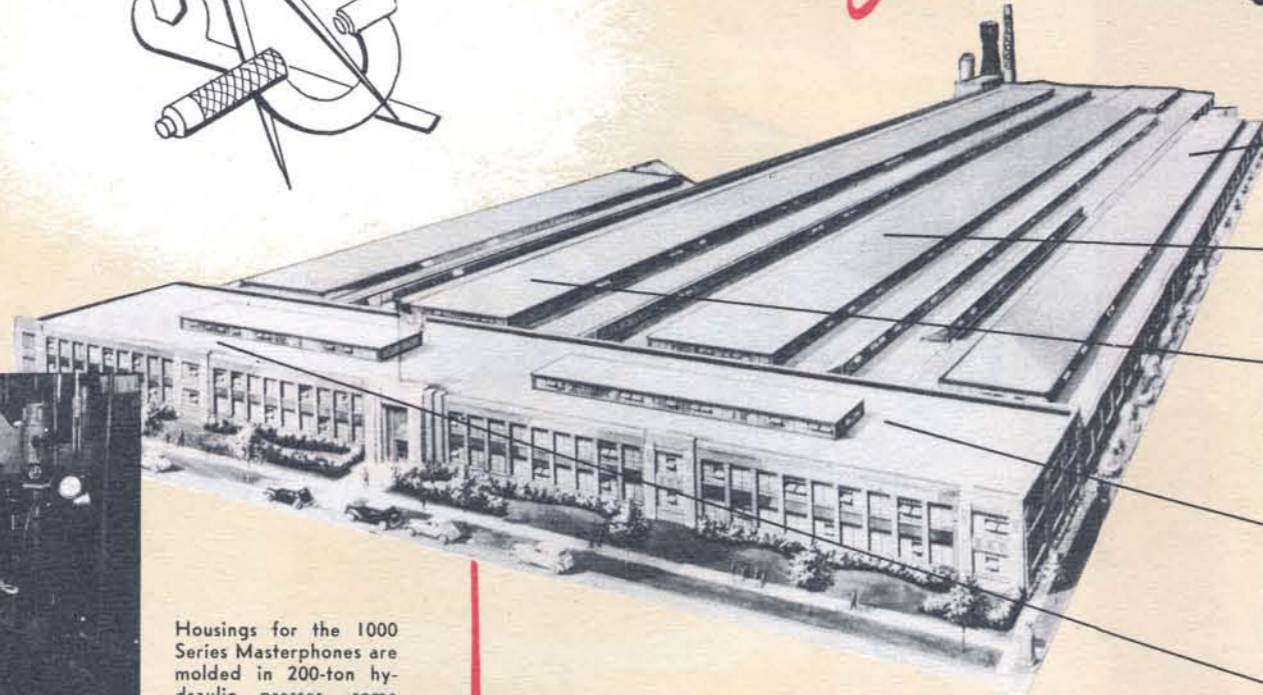
Barbara Bates appearing in the Hal Roach Cinecolor feature comedy "The Fabulous Joe."

- **One Base Plate** for both Desk and Wall Masterphones. Housings interchangeable in a matter of seconds.
- **One Universal Anti-Side Tone Triad Circuit** for all service applications. Never necessary to change permanent wiring. Color codes, physical circuit changes, and complicated servicing completely eliminated.
- **Plug-In Type Induction Coil, Condenser, and Dial Plug.** Complete elimination of soldering and unsoldering reduces maintenance costs to a minimum.
- **Induction Coil** provides best ratio between side-tone reduction, and transmission and reception. Three way switch permits matching induction coil to long or medium loops, and reduces transmitter current supply on short loops.
- **One Condenser** for all applications. Microfarad capacities of 0.5 or 1.0 mfd. provided by means of a simple switching unit.
- **Transmitter** provides greater electrical output and faithful articulation throughout a wide range of applied voltages. Reliable and dependable under varying temperature and humidity conditions.
- **Controlled Response Receiver** eliminates objectionable characteristics throughout the voice frequency range. High fidelity voice reproduction is assured.
- **Ringng Circuit Selector** quickly changes circuit to metallic or divided ringing. Simply shifting the slide link to the desired position adapts the universal circuit to the line installation required.
- **Ringer** equipped with large two-tone gongs provide maximum sound output of pleasing quality. Micrometer adjustment screw simplifies adjustment for volume and tone control.

Modern Production Methods and Planning



... BRING YOU A GREAT TELEPHONE *The Masterphone*



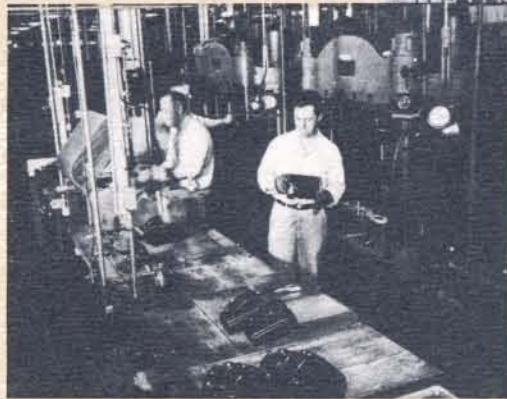
INSPECTION

ASSEMBLY

FABRICATION

ENGINEERING

ADMINISTRATION



Housings for the 1000 Series Masterphones are molded in 200-ton hydraulic presses, some of which are illustrated.



Here the interconnecting blocks and ringers are mounted to the base plates and the potted condensers and induction coils are plugged into the interconnecting block.



The receiver, most sensitive component of the Masterphone handset, includes 22 parts—some so delicate that they are assembled under a magnifying glass.



Final inspection of the complete instrument is as thorough as the first raw material tests that are made in the extensive Kellogg Laboratory.



Soon these Masterphones will be providing dependable, trouble-free low cost service in thousands of homes and offices throughout the country.

Modern industry recognizes through long experience that efficiency is the most vital factor in gaining and holding customer satisfaction. Kellogg efficiency has been typically reflected in the production of the 1000 Series Masterphone. The Masterphone is the pacesetter for continued high instrument standards, having behind it the skills and foresight which fifty years of service and progress can not but help to bring. If it's the best you want, you want the Masterphone.

KELLOGG SWITCHBOARD AND SUPPLY COMPANY

6650 SOUTH CICERO AVE.
CHICAGO 38, ILLINOIS



1000 Type



D-1000 Type



1100 Type



D-1100 Type



Hand Generator Boxes
No. 1203 3-Bar.
No. 1205 5-Bar.
No. 1206 6-Bar.

IT'S EASY TO ORDER

The Masterphone...

In ordering Kellogg Masterphones follow these two steps. (1) Determine the class of service from chart 1 and select the basic code of the particular instrument you require. (All codes beginning with 10 such as 1000, D-1000, 1062 are desk telephones. All codes beginning with 11 such as 1100, D-1100, 1162 are wall telephones.) (2) Then select the ringer code required from chart 2 and affix this code to the basic code number.

SELECT A BASIC CODE

Common Battery Service		Common Battery Signaling - Local Battery Talking Service		Common Battery — for use with existing Kellogg #610 Triad Circuit type steel desk set boxes		CB service—for use with existing #602 Booster Circuit desk set boxes. Magneto service — for use with existing Kellogg #2300 and superseding #3300 desk set boxes. Also for use with other makes of three conductor desk set boxes.		Magneto service — for use with Kellogg #1200 Type Hand Generator Boxes, shown on inside page.		Magneto service — for use with existing Kellogg #2500, and superseding #3500 desk set boxes.	
MANUAL	DIAL	MANUAL	DIAL	MANUAL	DIAL	MANUAL	DIAL	MANUAL		MANUAL	
1000	D-1000	1020	D-1020	1060	D-1060	1062	D-1062	1040		1040-LR	
1100	D-1100	1120	D-1120	1160	D-1160	1162	D-1162	1140		1140-LR	Less Condenser
*1001	*D-1001	*1021	*D-1021	*1061	*D-1061	*1063	*D-1063	*1041		1041-LR	
*1101	*D-1101	*1121	*D-1121	*1161	*D-1161	*1163	*D-1163	*1141		1141-LR	
								1050 } 1150 }	Less Condenser	1040-CLR 1140-CLR 1041-CLR 1141-CLR	With Condenser

*These Masterphones are equipped with the "Press-to-Talk" Switch.

EXAMPLE: D-1000

THEN SELECT A RINGER CODE

Biased Ringers	Harmonic Ringers		Straight Line Ringers
BA—High Impedance BB—Med. Impedance BC—Low Impedance	HA1—33 1/3 cycle HA2—50 cycle HA3—66 2/3 cycle HA4—16 2/3 cycle HA5—25 cycle	HB1—30 cycle HB2—42 cycle HB3—54 cycle HB4—66 cycle HB5—16 cycle	HCI—20 cycle HC2—60 cycle SA—High Impedance SB—Med. Impedance SC—Low Impedance

EXAMPLE: D-1000-BA

THEN SELECT A KOILED KORD IF DESIRED: (Code-K)

EXAMPLE: D-1000-BA-K

Notes

Literature!

If you have not already received a copy of "An X-Ray Story of the Kellogg Masterphones" or "Kellogg Masterphones Catalog" send for them today. Check the item you want, sign and return to us.

[] The "An X-Ray Story of the Kellogg Masterphones" is a unique presentation which literally takes a telephone apart before your eyes.

[] The "Kellogg Masterphones Catalog" contains many illustrations and descriptions of major Masterphone components along with parts lists and maintenance procedure.

Notes: The "Press-to-Talk" switch is made available for use on party lines to prevent interference with dialing or ringing impulses should a second party on the line remove the receiver during this interval. It also enables a subscriber to "listen in" on the line after placing a revertive call to ascertain when the ringing has stopped and the called party answers.

Three dials are furnished. The standard dial incorporates a white porcelain enameled plate numbered in black digits from 1 to 0. This dial comes also with digits from 1 to 0, but with the word "Operator" faced over the "0" digit (Code 10-DO). The metropolitan dial is numbered with black letters A to Z and red digits 1 to 0 (Code 10-G). All dial Masterphones are equipped with the standard dial unless otherwise specified. To order either of the latter two dials affix the code number of the dial desired to the telephone code number.

EXAMPLE: D-1000-HA1-10-G